

Activity Name	Original Duration	Planned Start	Planned Finish	2011				2012				2013				2014				2015				2016	
				Q3	Q4	Q1	Q2	Q3	Q4	Q1	Q2	Q3	Q4	Q1	Q2	Q3	Q4	Q1	Q2	Q3	Q4	Q1	Q2		
HY/2009/15 - CWB TUNNEL (CBTS SECTION)																									
SUBMISSIONS COMPLYING WITH EPs																									
EM&A Manual (rely on the Master EP's submission EP-364/2009/A Condition 2.9)																									
Baseline Monitoring Report (rely on the Master EP's submission EP-364/2009 Condition 3.3)																									
Monthly EM&A (rely on the masters EP's Submission, EP-364/2009/A Condition 3.4)																									
A dedicated website (rely on the master EP's submission, EP-364/2009/A Condition 4.2)																									
Management organization of main construction companies (FEP Condition 2.6)	1d	02-Oct-10	02-Oct-10																						
Work Schedule (FEP Condition 2.7)	1d	27-Oct-10	27-Oct-10																						
Location Plan (FEP Condition 2.8)	1d	27-Oct-10	27-Oct-10																						
Noise Management plan (FEP Condition 2.9)	1d	27-Oct-10	27-Oct-10																						
Landscape plan (FEP condition 2.10)	1d	31-Jan-11	31-Jan-11																						
EAST VENTILATION ADIT																									
CCT @ Portion 1, 2, 4, 6, 22	1315d	27-Sep-10	03-May-14																						
EV Adit @ Portion 4-Advance Works	526d	27-Sep-10	05-Mar-12																						
EV Adit Portion 1, 2, 6, 22	26d	22-Dec-11	16-Jan-12																						
EV Adit-based on Conforming Design	323d	15-Feb-12	02-Jan-13																						
TCBR1E (TS1 Area)																									
Diaphragm Wall Construction (incl. SI, & tests after completion)	107d	26-Apr-11	10-Aug-11																						
Excavation & Lateral Support, ELS	99d	16-Jul-11	22-Oct-11																						
Cut & Cover Tunnel Construction (incl. backfill)	78d	22-Oct-11	07-Jan-12																						
OHVD and Cable Trough (access from Portion 22)	76d	18-Dec-13	03-Mar-14																						
TCBR2 + TCBR3 (TS2 Area)																									
Diaphragm Wall Construction	118d	06-Jul-12	31-Oct-12																						
Excavation & Lateral Support, ELS	248d	06-Jul-12	10-Mar-13																						
Cut & Cover Tunnel Construction	164d	11-Mar-13	21-Aug-13																						
OHVD Cable Trough (Access from Portion 22)	150d	05-Aug-13	01-Jan-14																						
TCBR1W (TS4 Area)																									
Diaphragm Wall Construction	148d	28-Jun-11	22-Nov-11																						
Excavation & Lateral Support, ELS	319d	26-Jun-11	11-May-12																						
Landing Steps - Demolition/Reconstruct as footpath	40d	28-Jun-11	23-Aug-11																						

- ◆ Milestone
- ◆ Milestone
- ▨ Remaining Work
- ▨ Critical Remaining Work
- ▨ Actual Work

1 of 2

China State Construction Engineering (Hong Kong) Ltd.

Contract No. HY/2009/15 - Central Wan Chai By Pass - Tunnel

(CBTS Section)

Prepared by William Caluza			
Date	Revision	Checked	Approved
14-Mar-11	Revision C	ST	KL
	File: GC01a		
	(Layout:HY/2009/15: CWB - Summary)		

中國建築工程(香港)有限公司

CHINA STATE CONSTRUCTION ENGINEERING (HONG KONG) LTD

Activity Name	Original Duration	Planned Start	Planned Finish	2011					2012				2013				2014				2015				2016				
				Q3	Q4	Q1	Q2	Q3	Q4	Q1	Q2	Q3	Q4	Q1	Q2	Q3	Q4	Q1	Q2	Q3	Q4	Q1	Q2	Q3	Q4	Q1			
Rock Excavation	235d	25-Apr-12	15-Dec-12																										
ME4-Diaphragm Wall	114d	10-May-12	19-Oct-12																										
AS Logistics Area for Mined Tunneling Works	174d	01-Jun-12	07-Feb-13																										
ME4-ELS Works	212d	01-Jun-12	02-Apr-13																										
SCL Entrusted Works	291d	18-Jul-12	08-Sep-13																										
Cut & Cover Tunnel Construction (w/o TS4 +)	111d	17-Dec-12	06-Apr-13																										
ME4-RC Structure	146d	28-Jan-13	21-Aug-13																										
OHVD and Cable Trough (Access from TZ5/TPCWAE/TPCWAW)	180d	17-Jun-13	13-Dec-13																										
MINED TUNNEL																													
CHT Protection Works @ location A, B, C	342d	27-Sep-10	01-Feb-12																										
Tunnel works from West Portal (access from TPCWAE& TZ5	418d	12-Mar-12	30-Oct-13																										
Tunnel Works from East Portal (Access from TS4 Area)	214d	30-Mar-12	01-Feb-13																										
Tunnel OHVD & Cable Trough	384d	02-Dec-13	22-May-15																										
TPCWAE																													
Drainage Diversion works along Hung Hing Road (Portion 19)	176d	15-Oct-10	24-Jun-11																										
Diaphragm Wall Construction	147d	20-May-11	13-Oct-11																										
Excavation & Lateral Support, ELS	421d	20-May-11	13-Jul-12																										
Rock Excavation	208d	12-Mar-12	03-Oct-12																										
AS Logistics Area for Mined Tunneling works	342d	12-May-12	18-Apr-13																										
Cut & Cover Tunnel Construction	130d	28-Jan-13	06-Jun-13																										
OHVD and Cable Trough (Access from TZ5/TPCWAW)	182d	18-Feb-15	18-Aug-15																										
TPCWAW & PORTION 11																													
Diaphragm Wall Construction + Portion 11	222d	25-Oct-13	03-Jun-14																										
Excavation & Lateral Support, ELS	478d	25-Oct-13	14-Feb-15																										
Cut & Cover Tunnel Construction	143d	30-Dec-14	21-May-15																										
OHVD and Cable Trough Installation (Access from Portion 11)	235d	22-May-15	11-Jan-16																										

- ◆ Milestone
- ◆ Milestone
- ▬ Remaining Work
- ▬ Critical Remaining Work
- ▬ Actual Work

2 of 2

China State Construction Engineering (Hong Kong) Ltd.
Contract No. HY/2009/15 - Central Wan Chai By Pass - Tunnel
(CBTS Section)

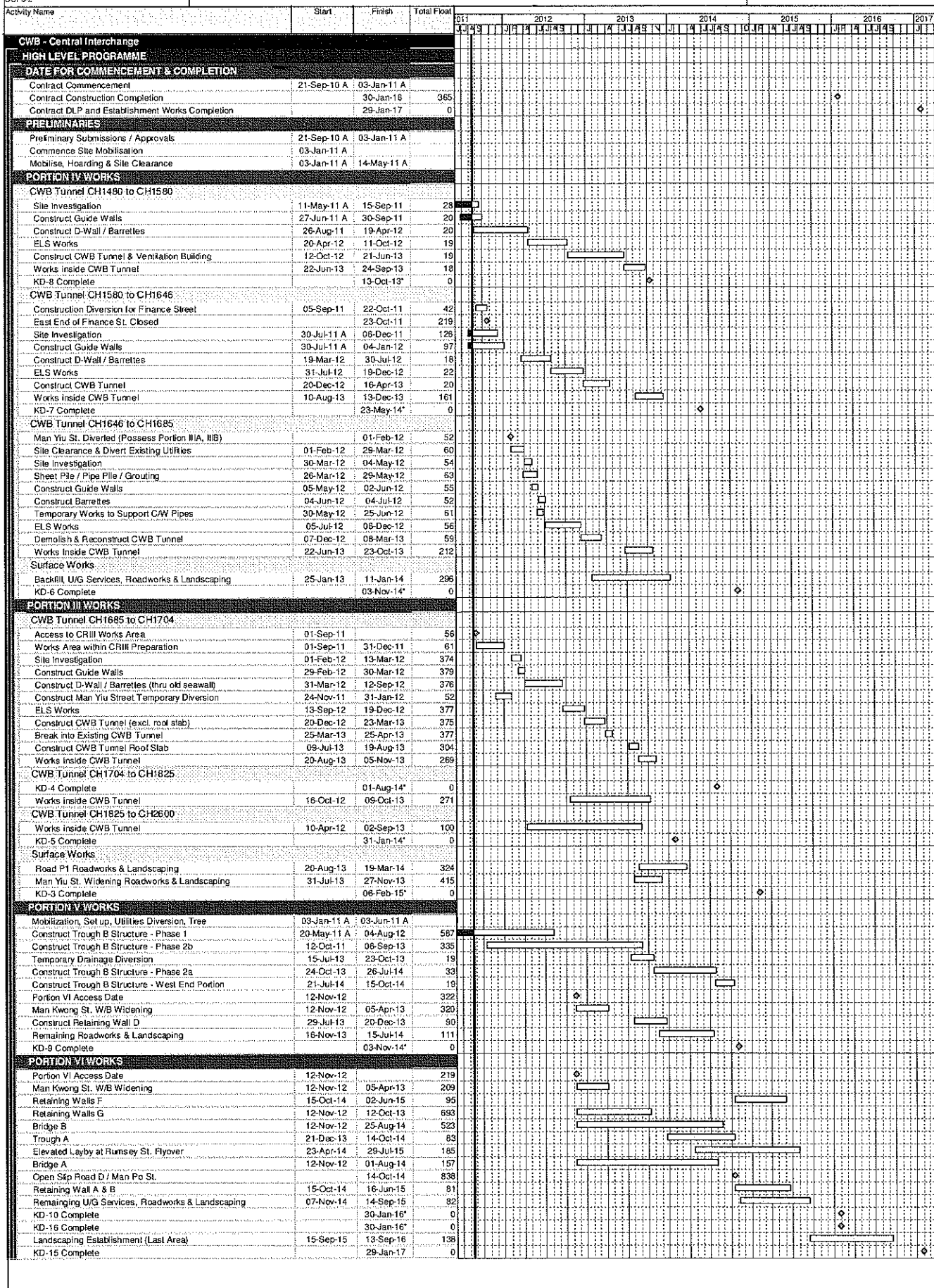
Prepared by William Caluza			
Date	Revision	Checked	Approved
14-Mar-11	Revision C	ST	KL
	File: 0001a		
	(Layout: HY/2009/15: CWB - Summary)		



Data Date: 20-Aug-11
 Print Date: 29-Aug-11
 CCP3-2

HY/2009/18 Central - Wan Chai Bypass (Central Interchange)

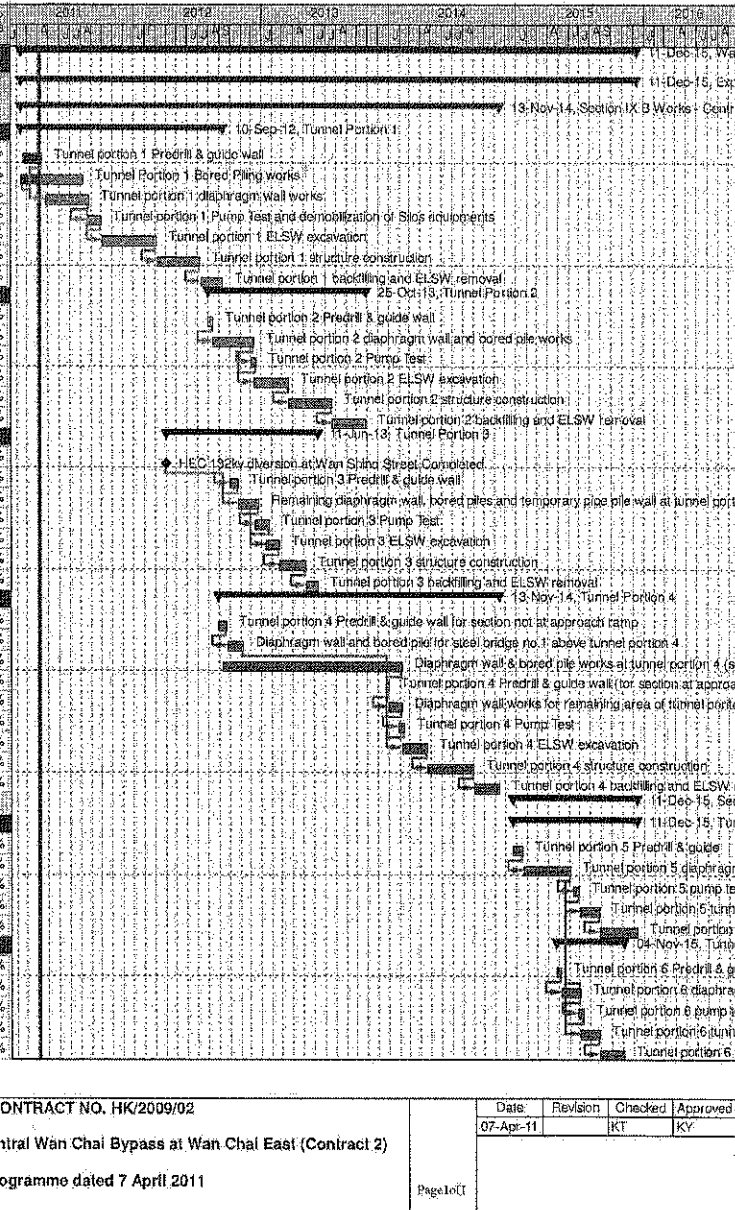
TASK filter: HL



Wan Chai Development Phase II - Central - Wan Chai
Bypass at Wan Chai East CONTRACT HK/2009/02

CHUN WO - CRGL JV

Activity ID	Activity Name	OD	Start	Finish	% Planned	2011	2012	2013	2014	2015	2016
Wan Chai Development Phase II - Central - Wan Chai Bypass at Wan Chai East											
Expanded and More Detailed Initial Works Programme											
Section IX B Works - Central - Wan Chai Bypass Tunnel Structure from chainage 3400 to eastern tunnel											
Tunnel Portion 1											
S9B-T1-0005	Tunnel portion 1 Predrill & guide wall	10	18-Feb-11	13-Apr-11	40%						
S9B-T1-0007	Tunnel Portion 1 Bored Piling works	105	08-Feb-11	08-Aug-11	0%						
S9B-T1-0010	Tunnel portion 1 diaphragm wall works	105	26-Apr-11	27-Aug-11	0%						
S9B-T1-0015	Tunnel portion 1 Pump Test and demobilization of Slos equipments	35	20-Aug-11	30-Sep-11	0%						
S9B-T1-0020	Tunnel portion 1 ELSW excavation	130	03-Oct-11	07-Mar-12	0%						
S9B-T1-0030	Tunnel portion 1 structure construction	100	09-Mar-12	09-Jul-12	0%						
S9B-T1-0040	Tunnel portion 1 backfilling and ELSW removal	54	10-Jul-12	10-Sep-12	0%						
Tunnel Portion 2											
S9B-T2-0105	Tunnel portion 2 Predrill & guide wall	10	02-Aug-12	13-Aug-12	0%						
S9B-T2-0010	Tunnel portion 2 diaphragm wall and bored pile works	100	14-Aug-12	10-Dec-12	0%						
S9B-T2-0015	Tunnel portion 2 Pump Test	14	03-Dec-12	18-Dec-12	0%						
S9B-T2-0020	Tunnel portion 2 ELSW excavation	80	11-Dec-12	19-Mar-13	0%						
S9B-T2-0030	Tunnel portion 2 structure construction	100	20-Mar-13	22-Jul-13	0%						
S9B-T2-0040	Tunnel portion 2 backfilling and ELSW removal	80	23-Jul-13	25-Oct-13	0%						
Tunnel Portion 3											
S9B-T3-0005	HEC 132kv diversion at Wan Shing Street Completed	0	01-Apr-12*		0%						
S9B-T3-0008	Tunnel portion 3 Predrill & guide wall	20	02-Oct-12	25-Oct-12	0%						
S9B-T3-0010	Remaining diaphragm wall, bored piles and temporary pipe pile wall at tunnel portion 3	50	25-Oct-12	22-Dec-12	0%						
S9B-T3-0015	Tunnel portion 3 Pump Test	30	15-Dec-12	22-Jan-13	0%						
S9B-T3-0020	Tunnel portion 3 ELSW excavation	30	15-Jan-13	20-Feb-13	0%						
S9B-T3-0030	Tunnel portion 3 structure construction	80	21-Feb-13	08-May-13	0%						
S9B-T3-0040	Tunnel portion 3 backfilling and ELSW removal	30	07-May-13	11-Jun-13	0%						
Tunnel Portion 4											
S9B-T4-0005	Tunnel portion 4 Predrill & guide wall for section not at approach ramp	21	30-Aug-12	22-Sep-12	0%						
S9B-T4-0010	Diaphragm wall and bored pile for steel bridge no. 1 above tunnel portion 4	40	24-Sep-12	10-Nov-12	0%						
S9B-T4-0020	Diaphragm wall & bored pile works at tunnel portion 4 (section not at approach ramp)	420	11-Sep-12	05-Feb-14	0%						
S9B-T4-0025	Tunnel portion 4 Predrill & guide wall (for section at approach ramp)	5	23-Dec-13	30-Dec-13	0%						
S9B-T4-0030	Diaphragm wall works for remaining area of tunnel portion 4 (for section at approach ramp)	30	31-Dec-13	06-Feb-14	0%						
S9B-T4-0035	Tunnel portion 4 Pump Test	14	28-Jan-14	14-Feb-14	0%						
S9B-T4-0040	Tunnel portion 4 ELSW excavation	60	07-Feb-14	19-Apr-14	0%						
S9B-T4-0050	Tunnel portion 4 structure construction	110	22-Apr-14	01-Sep-14	0%						
S9B-T4-0060	Tunnel portion 4 backfilling and ELSW removal	60	02-Sep-14	13-Nov-14	0%						
Section X Works - Central - Wan Chai Bypass Tunnel Structure from western tunnel to chainage 3400											
Tunnel Portion 5											
S10-T5-0005	Tunnel portion 5 Predrill & guide	21	23-Dec-14	19-Jan-15	0%						
S10-T5-0010	Tunnel portion 5 diaphragm wall & bored pile works	110	20-Jan-15	04-Jun-15	0%						
S10-T5-0015	Tunnel portion 5 pump test	14	13-Jun-15	30-Jun-15	0%						
S10-T5-0020	Tunnel portion 5 tunnel ELSW excavation	45	04-Jul-15	25-Aug-15	0%						
S10-T5-0030	Tunnel portion 5 tunnel structure construction	90	26-Aug-15	11-Dec-15	0%						
Tunnel Portion 6											
S10-T6-0040	Tunnel portion 6 Predrill & guide	12	24-Apr-15	08-May-15	0%						
S10-T6-0050	Tunnel portion 6 diaphragm wall & bored pile works at Area 10	45	09-May-15	09-Jul-15	0%						
S10-T6-0055	Tunnel portion 6 pump test	14	25-Jun-15	11-Jul-15	0%						
S10-T6-0060	Tunnel portion 6 tunnel ELSW excavation at Area 10	45	04-Jul-15	26-Aug-15	0%						
S10-T6-0070	Tunnel portion 6 tunnel structure construction at Area 10	58	26-Aug-15	04-Nov-15	0%						



Wan Chai Development Phase II - Central Wan Chai Bypass at Wan Chai East (Contract 2)
 CEDD CONTRACT NO. HK/2009/02
 Revised Programme dated 7 April 2011

Date	Revision	Checked	Approved
07-Apr-11		KT	KY

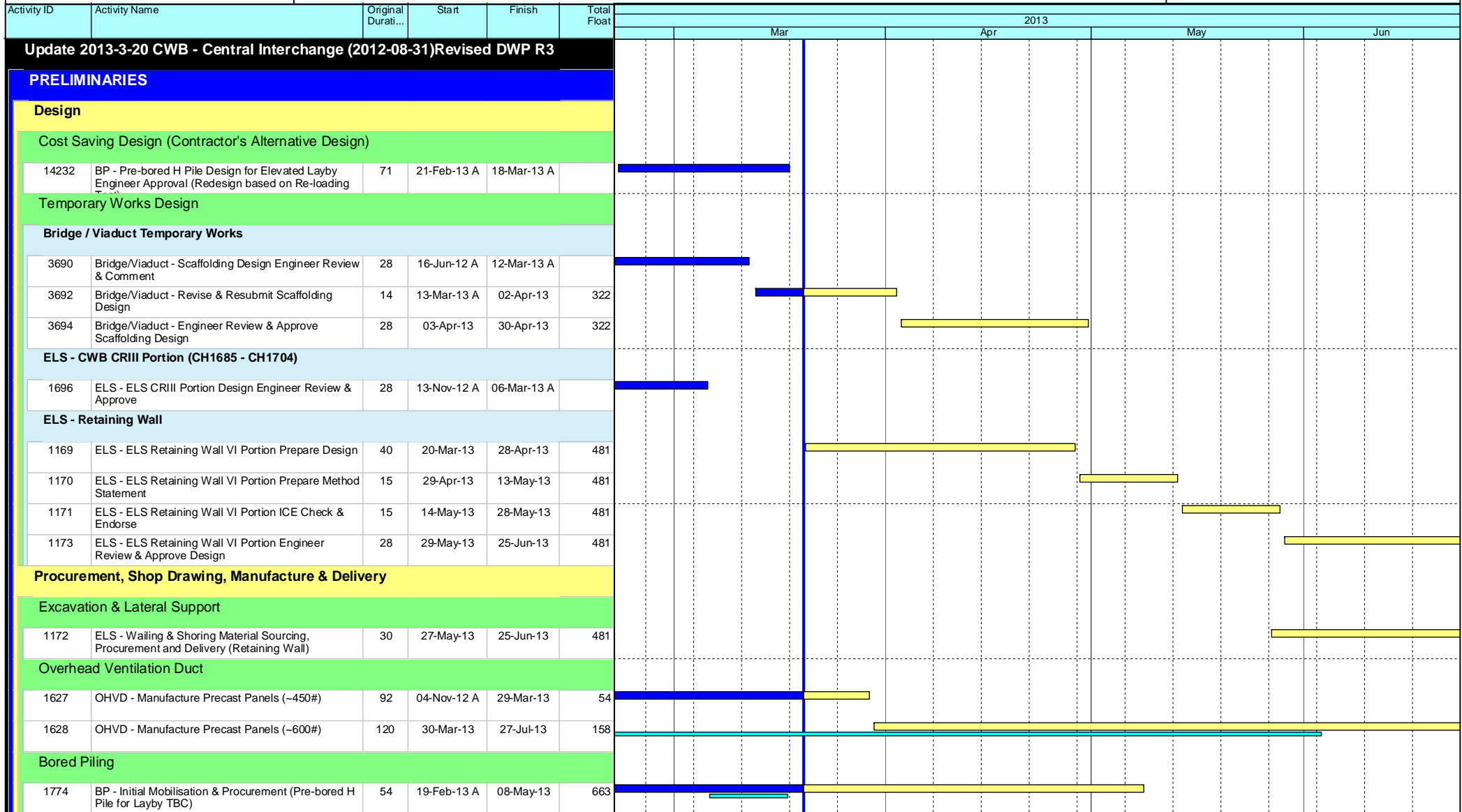
Page 10 of 11

Data Date: 20-Mar-13

HY/2009/18 Central - Wan Chai Bypass (Central Interchange)



TASK filters: 3 Months, Not HL.



- ◆ Current Milestone
- Critical Remaining Work
- ▬ Level of Effort
- ▬ Remaining Work
- ▲ Baseline Milestone
- ▬ Project Baseline
- ▬ Actual Work

Leighton Contractors (Asia) Limited Programme Update 30 (Mar 2013) THREE MONTH ROLLING

Project ID: U030
 Baseline: DCP4-4
 Layout: Update Three Month Rolling U029
 Page 1 of 7

Date	Revision	Checked	Approv...
21-Mar-13	U030	EC	RW
21-Feb-13	U029	EC	RW

Data Date: 20-Mar-13

HY/2009/18 Central - Wan Chai Bypass (Central Interchange)



TASK filters: 3 Months, Not HL.

Activity ID	Activity Name	Original Durati...	Start	Finish	Total Float	2013											
						Mar			Apr			May			Jun		
Post-tensioning																	
3835	PT - Initial Mobilisation & Procurement	45	20-Feb-13 A	02-May-13	319												
1137	PT - Prepare & Submit Post-tensioning Method Statement	15	21-Mar-13	04-Apr-13	319												
1141	PT - Post-tensioning Method Statement Engineer Review & Approval	28	05-Apr-13	02-May-13	319												
Bridge Bearings																	
3845	BEAR - Procure & Fabricate Bridge Bearings	30	15-Nov-12 A	08-May-13	324												
1142	BEAR - Prepare & Submit Bearing & Plinth Method Statement	28	20-Mar-13	16-Apr-13	443												
1143	BEAR - Bearing & Plinth Method Statement Engineer Review & Approval	28	17-Apr-13	14-May-13	443												
3846	BEAR - Delivery of Bearings	7	09-May-13	15-May-13	324												
Establishment, Mobilisation & Advanced Works																	
Instrumentation and Monitoring																	
3012	INS - Portion VI Install Instrumentation	54	13-Nov-12 A	19-Mar-13 A													
1402	INS - Portion VI Initial Reading	30	04-Mar-13 A	19-Apr-13	430												
SECTION 3A - ALL TUNNEL WORKS IN PORTION IIIB																	
CWB Tunnel - CH1704 to CH1825																	
CWB Tunnel Internal Works																	
1720	1704-1825 - Prepare CJ (substantial completed)	40	21-Dec-12 A	08-Mar-13 A													
CWB Tunnel - CH1685 to CH1704																	
CWB Tunnel Structure																	
1721	1685-1704 - Excavate to 2nd Layer (East)	8	06-Feb-13 A	22-Mar-13	60												
1719	1685-1704 - Erect 2nd Layer Strut (East)	8	23-Mar-13	05-Apr-13	60												
1722	1685-1704 - Excavate to 3rd Layer (East)	5	06-Apr-13	11-Apr-13	60												
1723	1685-1704 - Erect 3rd Layer Strut (East)	10	12-Apr-13	23-Apr-13	60												
1724	1685-1704 - Excavate to Formation Layer (East)	5	24-Apr-13	29-Apr-13	60												
1726	1685-1704 - Construct CWB Tunnel Base Slab & Waterproofing (Bay 12)	23	30-Apr-13	28-May-13	60												

- Current Milestone
- Critical Remaining Work
- Level of Effort
- Remaining Work
- Baseline Milestone
- Project Base Line
- Actual Work

Leighton Contractors (Asia) Limited Programme Update 30 (Mar 2013) THREE MONTH ROLLING

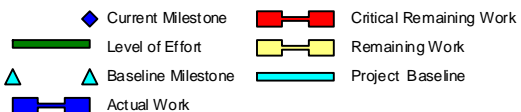
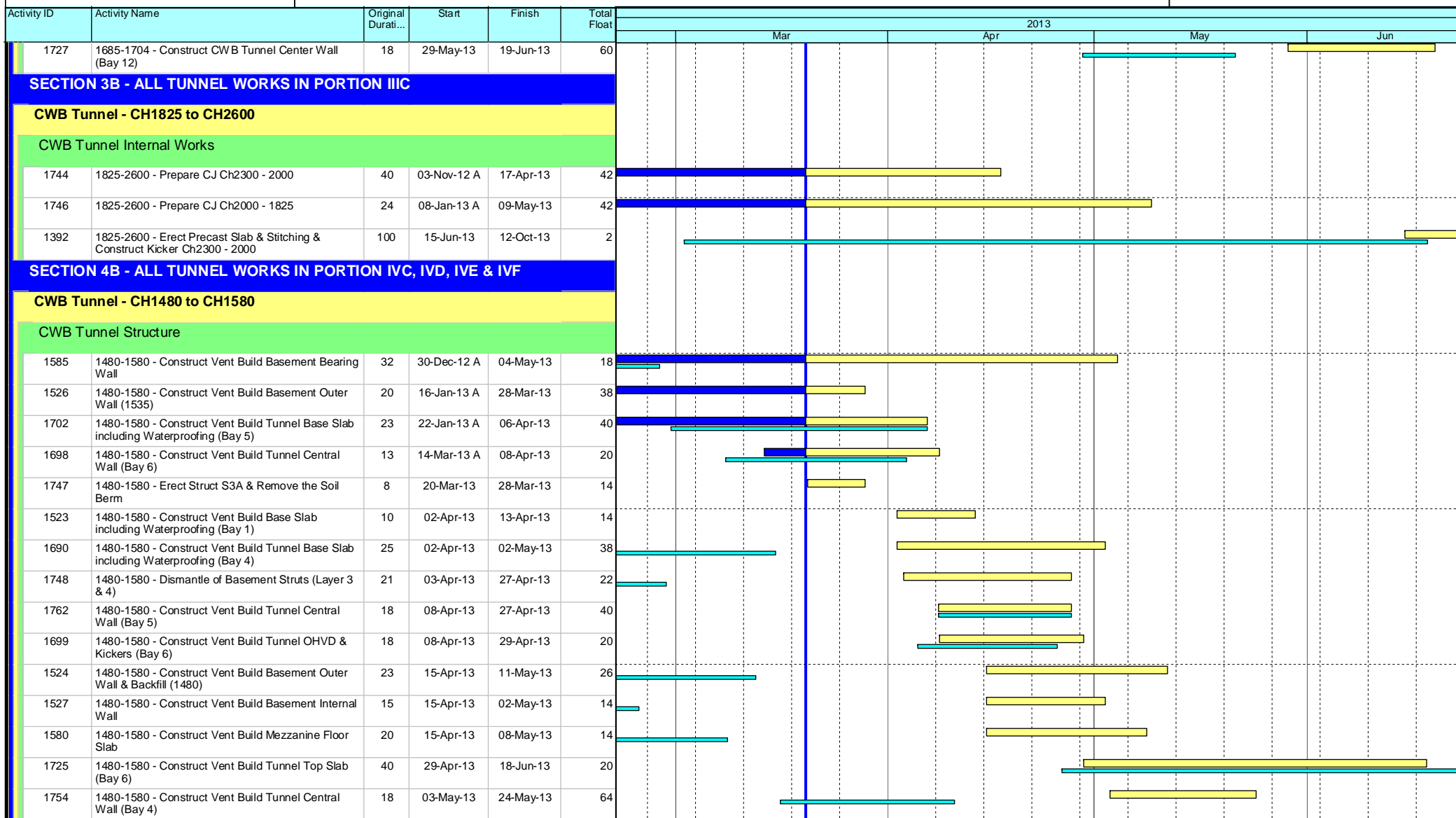
Project ID: U030
 Baseline: DCP4-4
 Layout: Update Three Month Rolling U029
 Page 2 of 7

Date	Revision	Checked	Approv...
21-Mar-13	U030	EC	RW
21-Feb-13	U029	EC	RW

HY/2009/18 Central - Wan Chai Bypass (Central Interchange)



TASK filters: 3 Months, Not HL.



Leighton Contractors (Asia) Limited Programme Update 30 (Mar 2013) THREE MONTH ROLLING

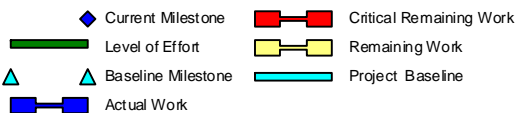
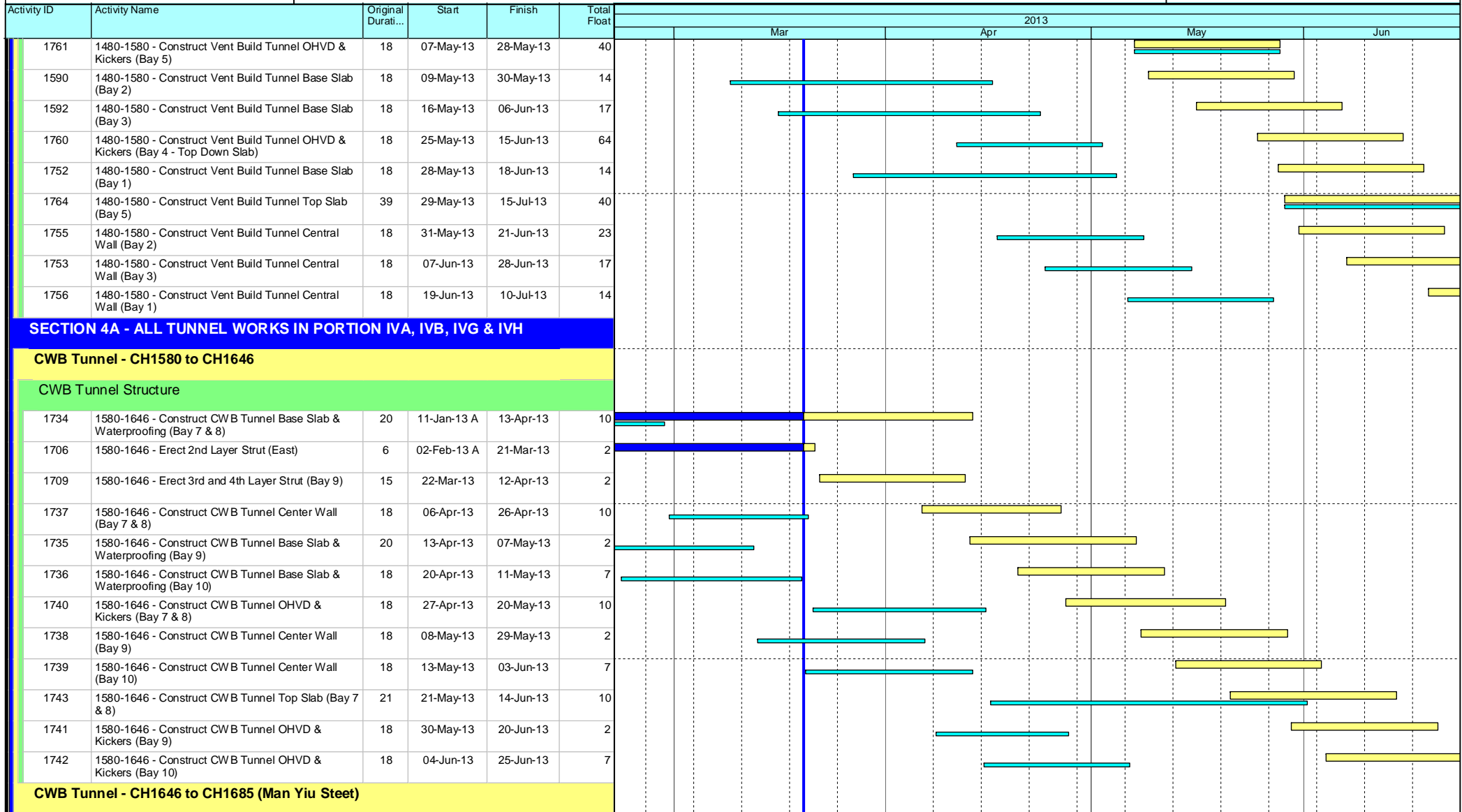
Project ID: U030
 Baseline: DCP4-4
 Layout: Update Three Month Rolling U029
 Page 3 of 7

Date	Revision	Checked	Approv...
21-Mar-13	U030	EC	RW
21-Feb-13	U029	EC	RW

HY/2009/18 Central - Wan Chai Bypass (Central Interchange)



TASK filters: 3 Months, Not HL.



Leighton Contractors (Asia) Limited Programme Update 30 (Mar 2013) THREE MONTH ROLLING

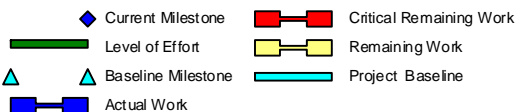
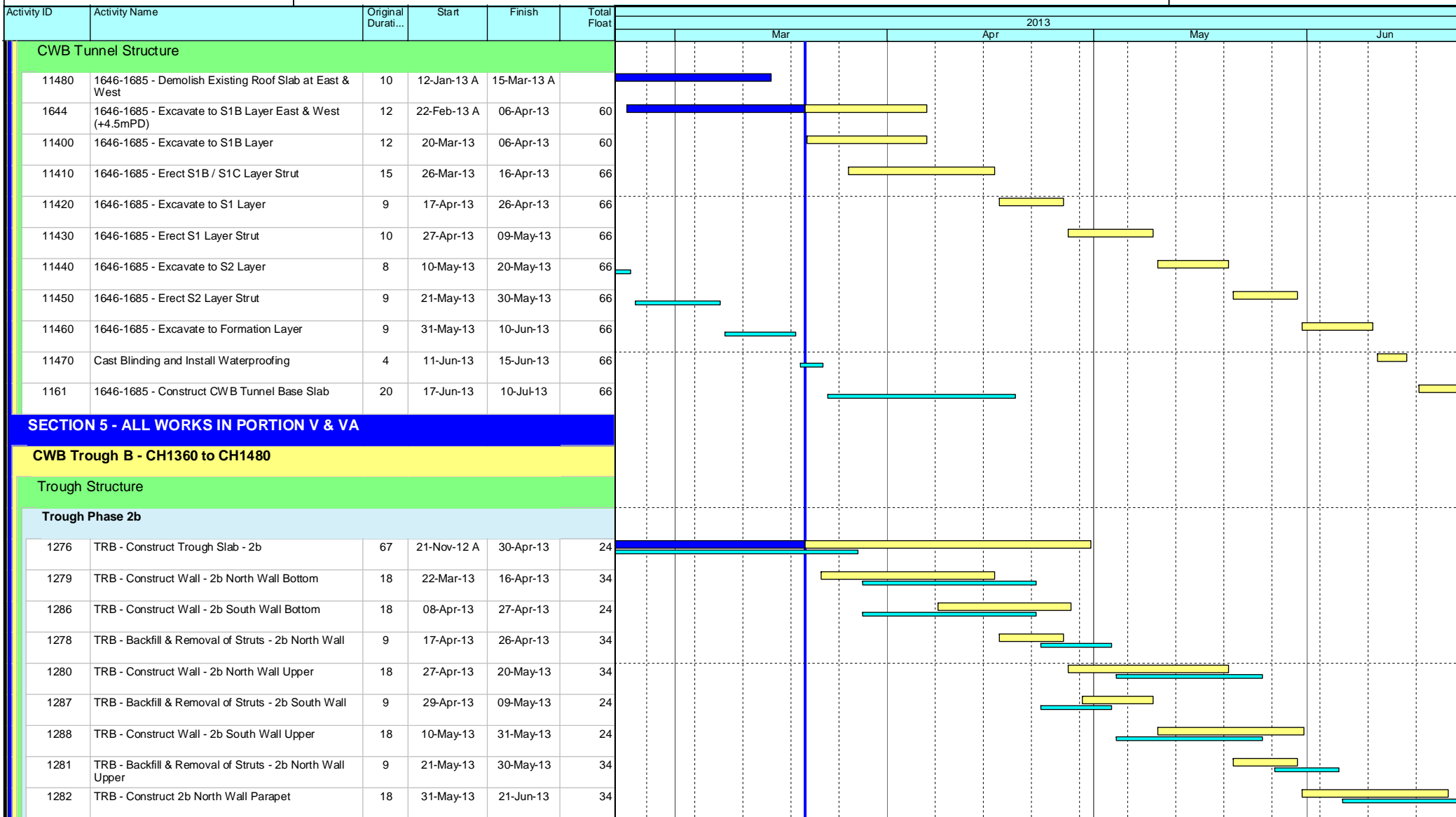
Project ID: U030
 Baseline: DCP4-4
 Layout: Update Three Month Rolling U029
 Page 4 of 7

Date	Revision	Checked	Approv...
21-Mar-13	U030	EC	RW
21-Feb-13	U029	EC	RW

HY/2009/18 Central - Wan Chai Bypass (Central Interchange)



TASK filters: 3 Months, Not HL.



Leighton Contractors (Asia) Limited Programme Update 30 (Mar 2013) THREE MONTH ROLLING

Project ID: U030
 Baseline: DCP4-4
 Layout: Update Three Month Rolling U029
 Page 5 of 7

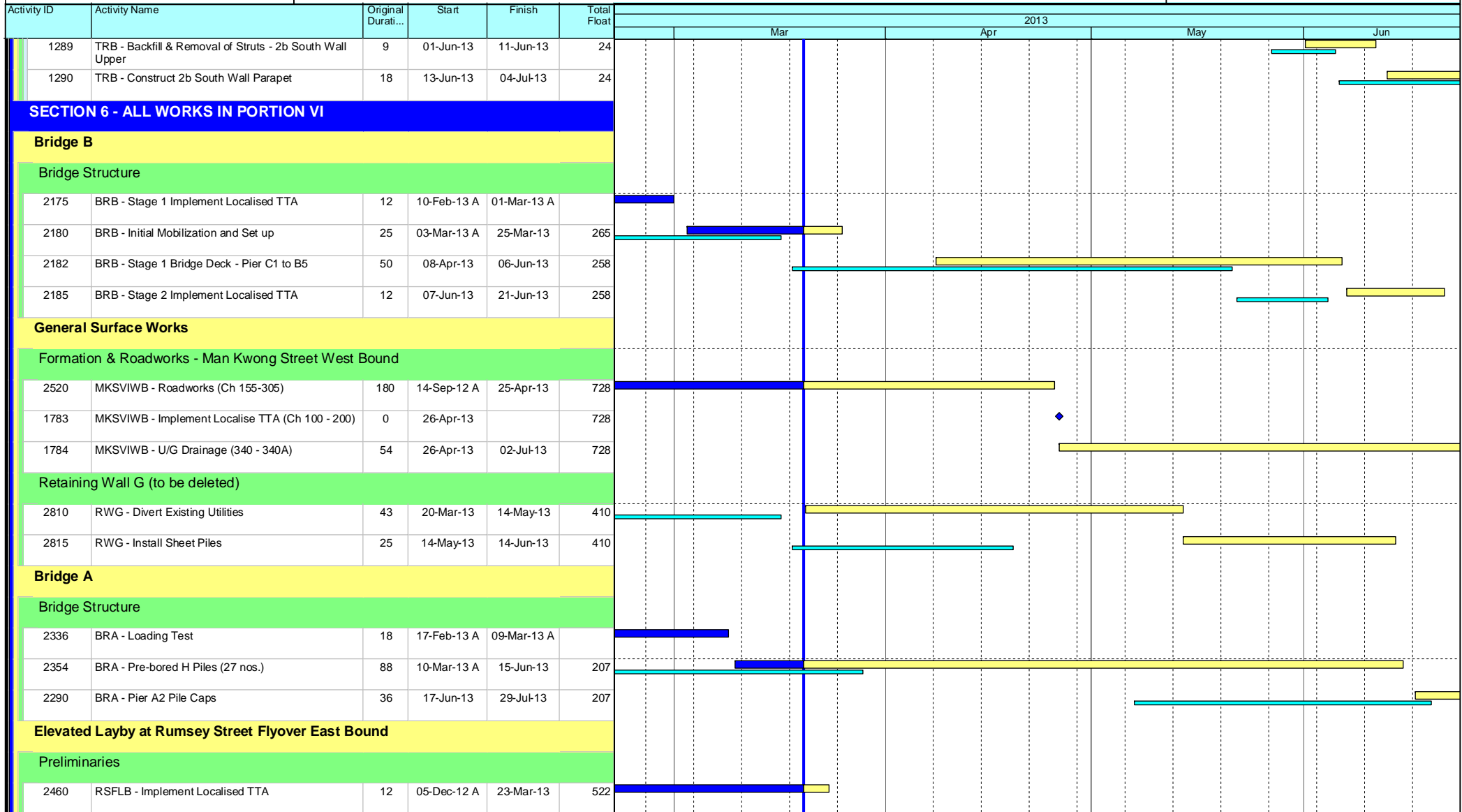
Date	Revision	Checked	Approv...
21-Mar-13	U030	EC	RW
21-Feb-13	U029	EC	RW

Data Date: 20-Mar-13

HY/2009/18 Central - Wan Chai Bypass (Central Interchange)



TASK filters: 3 Months, Not HL.



- ◆ Current Milestone
- Critical Remaining Work
- ▬ Level of Effort
- ▬ Remaining Work
- ▲ Baseline Milestone
- ▬ Project Baseline
- Actual Work

Leighton Contractors (Asia) Limited Programme Update 30 (Mar 2013) THREE MONTH ROLLING

Project ID: U030
 Baseline: DCP4-4
 Layout: Update Three Month Rolling U029
 Page 6 of 7

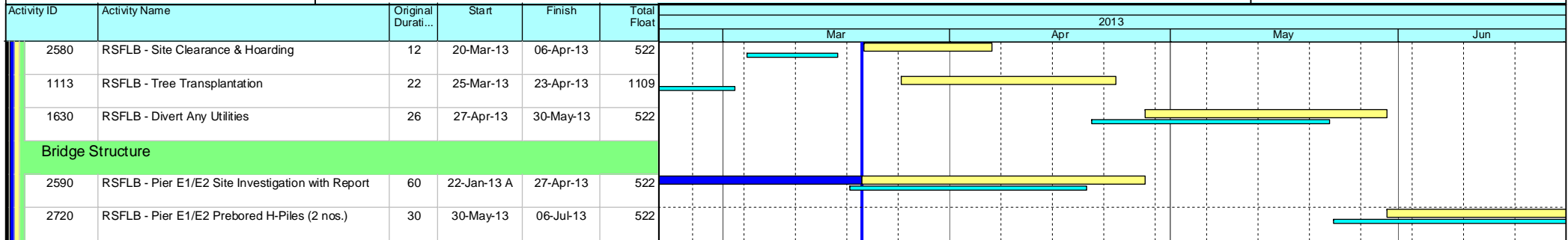
Date	Revision	Checked	Approv...
21-Mar-13	U030	EC	RW
21-Feb-13	U029	EC	RW

Data Date: 20-Mar-13

HY/2009/18 Central - Wan Chai Bypass (Central Interchange)



TASK filters: 3 Months, Not HL.



- ◆ Current Milestone
- Critical Remaining Work
- ▬ Level of Effort
- ▬ Remaining Work
- ▲ Baseline Milestone
- ▬ Project Baseline
- ▬ Actual Work

Leighton Contractors (Asia) Limited Programme Update 30 (Mar 2013) THREE MONTH ROLLING

Project ID: U030
 Baseline: DCP4-4
 Layout: Update Three Month Rolling U029
 Page 7 of 7

Date	Revision	Checked	Approv...
21-Mar-13	U030	EC	RW
21-Feb-13	U029	EC	RW

Activity ID	Activity Name	Rem Dur	Start	Finish	2013																							
					April						May						June						July					
					25	01	08	15	22	29	06	13	20	27	03	10	17	24	01	08	15							
3MRP - Apr 2013 to Jul 2013																												
02 - PRE-CONSTRUCTION WORKS																												
02.2 - Contractor's Submission																												
0220-1360	Tunnel Structures Materials - Submission	12	19-Jul-12 A	01-May-13	Tunnel Structures Materials - Submission																							
0220-1370	Tunnel Structures Materials - ER Review/Comment	12	14-Jan-13 A	07-May-13	Tunnel Structures Materials - ER Review/Comment																							
0220-1380	Tunnel Structures Materials - Resubmission	12	28-Jan-13 A	13-May-13	Tunnel Structures Materials - Resubmission																							
0220-1390	Tunnel Structures Materials - ER Approval	12	15-Mar-13 A	19-May-13	Tunnel Structures Materials - ER Approval																							
0220-1400	Tunnel Structures Materials - Procurement & Delivery	42	20-May-13	30-Jun-13	Tunnel Structures Materials - Procurement & Delivery																							
02.3 - Method Statement / Shop Drawings																												
0230-1360	MS Pre-cast Segment Launching by LG- Resubmission	0	21-Jan-13 A	08-Apr-13 A	MS Pre-cast Segment Launching by LG- Resubmission																							
0230-1370	MS Pre-cast Segment Launching by LG - ER Approval	9	28-Feb-13 A	28-Apr-13	MS Pre-cast Segment Launching by LG - ER Approval																							
0230-1490	MS Stressing Tendons - ER Approval	0	11-Feb-13 A	31-Mar-13 A	MS Stressing Tendons - ER Approval																							
0230-1700	MS Temporary Bridge TA1 - Submission	15	20-Apr-13	04-May-13	MS Temporary Bridge TA1 - Submission																							
0230-1710	MS Temporary Bridge TA1 - ER Review & Comment	28	05-May-13	01-Jun-13	MS Temporary Bridge TA1 - ER Review & Comment																							
0230-1720	MS Temporary Bridge TA1 - Resubmission	12	02-Jun-13	13-Jun-13	MS Temporary Bridge TA1 - Resubmission																							
0230-1730	MS Temporary Bridge TA - ER Approval	18	14-Jun-13	01-Jul-13	MS Temporary Bridge TA - ER Approval																							
0230-1890	MS Marine Pier Crosshead Construction - ER Approval	0	23-Mar-13 A	18-Apr-13 A	MS Marine Pier Crosshead Construction - ER Approval																							
0230-1910	MS Marine Temp Pile Removal - ER Review & Comment	0	11-Mar-13 A	18-Apr-13 A	MS Marine Temp Pile Removal - ER Review & Comment																							
0230-1920	MS Marine Temp Pile Removal - Resubmission	9	20-Apr-13	28-Apr-13	MS Marine Temp Pile Removal - Resubmission																							
0230-1930	MS Marine Temp Pile Removal - ER Approval	9	29-Apr-13	07-May-13	MS Marine Temp Pile Removal - ER Approval																							
02.4 - Contractor's Design and Build Items																												
0240-1030	Temp Bridge "TA1" Design - Resubmission	25	19-Mar-13 A	14-May-13	Temp Bridge "TA1" Design - Resubmission																							
0240-1035	Temp Bridge "TA1" Design - ER Approval	21	15-May-13	04-Jun-13	Temp Bridge "TA1" Design - ER Approval																							
0240-1040	Temp Bridge "TA" Design - Fabrication	48	15-May-13	01-Jul-13	Temp Bridge "TA" Design - Fabrication																							
0240-1041	Temp Bridge "TD" Design - Submission	36	01-Mar-13 A	25-May-13	Temp Bridge "TD" Design - Submission																							
0240-1042	Temp Bridge "TD" Design - ER review and comment	28	26-May-13	22-Jun-13	Temp Bridge "TD" Design - ER review and comment																							
0240-1043	Temp Bridge "TD" Design - Resubmission	36	23-Jun-13	28-Jul-13	Temp Bridge "TD" Design - Resubmission																							
0240-1105	Int. Noise Enclosure Structural Design - Submission	9	20-Mar-13 A	28-Apr-13	Int. Noise Enclosure Structural Design - Submission																							
0240-1110	Int. Noise Enclosure Structural Design - ER Review/Resubmission	48	29-Apr-13	15-Jun-13	Int. Noise Enclosure Structural Design - ER Review/Resubmission																							
0240-1112	Int. Noise Enclosure Structural Design - ER Approval	28	16-Jun-13	13-Jul-13	Int. Noise Enclosure Structural Design - ER Approval																							
0240-1126	Noise Barrier Design Structural Design - Submission	9	20-Mar-13 A	28-Apr-13	Noise Barrier Design Structural Design - Submission																							
0240-1127	Noise Barrier Design Structural Design - ER Review/Resubmission	48	29-Apr-13	15-Jun-13	Noise Barrier Design Structural Design - ER Review/Resubmission																							
0240-1128	Noise Barrier Design Structural Design - ER Approval	28	16-Jun-13	13-Jul-13	Noise Barrier Design Structural Design - ER Approval																							
0240-1150	Perm. Noise Enclosure Structural Design - Submission	9	20-Mar-13 A	28-Apr-13	Perm. Noise Enclosure Structural Design - Submission																							
0240-1160	Perm. Noise Enclosure Structural Design - ER Review/Resubmission	48	29-Apr-13	15-Jun-13	Perm. Noise Enclosure Structural Design - ER Review/Resubmission																							
0240-1161	Perm. Noise Enclosure Structural Design - ER Approval	28	16-Jun-13	13-Jul-13	Perm. Noise Enclosure Structural Design - ER Approval																							
0240-1270	Landscaping Design - Submission	90	01-Jul-13*	28-Sep-13	Landscaping Design - Submission																							
0240-1377	Cut & Cover Tunnel ELS Design - ER Approval	0	27-Feb-13 A	18-Apr-13 A	Cut & Cover Tunnel ELS Design - ER Approval																							
0240-1399	Segment Temp Stabilization System - ER Approval	0	04-Mar-13 A	16-Apr-13 A	Segment Temp Stabilization System - ER Approval																							
0240-1419	Segment Temp Pre-stress System - ER Approval	0	10-Mar-13 A	31-Mar-13 A	Segment Temp Pre-stress System - ER Approval																							
0240-1170	HGHK Permanent Carpark Design - Prep & Submit	90	08-Jul-13	05-Oct-13	HGHK Permanent Carpark Design - Prep & Submit																							
02.5 - Bridge Segment/Beam Off-site Precasting																												
0250-1700.04	Bridge Precast Beam Casting Bridge F4 Beam 1-2	14	08-Apr-13 A	03-May-13	Bridge Precast Beam Casting Bridge F4 Beam 1-2																							
0250-1700.02	Bridge Precast Beam Casting Bridge Beam F5-2	15	04-May-13	18-May-13	Bridge Precast Beam Casting Bridge Beam F5-2																							

- Remaining Level of Effort
- Actual Level of Effort
- Actual Work
- Remaining Work
- Critical Remaining Work
- ◆ Milestone

Contract HY/2009/19

Three Month Rolling Programme (20 APR 2013 to 19 JUL 2013) Rev. 1

3MRP

3MRP - Apr 2013 to Jul 2013

Page 1 of 7

Activity ID	Activity Name	Rem Dur	Start	Finish	2013																	
					April						May						June				July	
					25	01	08	15	22	29	06	13	20	27	03	10	17	24	01	08	15	
0250-1700.03	Bridge Precast Beam Casting Bridge F4 Beam 1-1	0	22-Mar-13 A	07-Apr-13 A	Bridge Precast Beam Casting Bridge F4 Beam 1-1																	
0250-1700.005	Bridge Precast Beam Casting Bridge F4 Beam 2-1	14	19-May-13	01-Jun-13	Bridge Precast Beam Casting Bridge F4 Beam 2-1																	
0250-1700.06	Bridge Precast Beam Casting Bridge F4 Beam 2-2	14	02-Jun-13	15-Jun-13	Bridge Precast Beam Casting Bridge F4 Beam 2-2																	
0250-1700.07	Bridge Precast Beam Casting Bridge F4 Beam 3-1	14	16-Jun-13	29-Jun-13	Bridge Precast Beam Casting Bridge F4 Beam 3-1																	
0250-1700.08	Bridge Precast Beam Casting Bridge F4 Beam 4-1	14	30-Jun-13	13-Jul-13	Bridge Precast Beam Casting Bridge F4 Beam 4-1																	
0250-1600.09	Bridge D3 Pier D11 Precasting Segment (4-17) - Mould S2	0	17-Jan-13 A	23-Mar-13 A	Bridge D3 Pier D11 Precasting Segment (4-17) - Mould S2																	
0250-1600.10	Bridge F1 Pier F1A Precasting Segment (1-13) - Mould S1	28	30-Apr-13	28-May-13	Bridge F1 Pier F1A Precasting Segment (1-13) - Mould S1																	
0250-1600.11	Bridge F2 Pier F05 Precasting Segment (1-13) - Mould S1	28	28-May-13	25-Jun-13	Bridge F2 Pier F05 Precasting Segment (1-13) - Mould S1																	
0250-1650.02	Bridge D3 Pier D12 Precasting Segment (1-4) - Mould S2	8	24-Mar-13 A	27-Apr-13	Bridge D3 Pier D12 Precasting Segment (1-4) - Mould S2																	
0250-1650.06	Bridge F1 Pier F2A Precasting Segment (1-11) - Mould S1	11	18-Mar-13 A	30-Apr-13	Bridge F1 Pier F2A Precasting Segment (1-11) - Mould S1																	
0250-1650.03	Bridge F1 Pier D12 Precasting Segment (1-4) - Mould S2	16	28-Apr-13	13-May-13	Bridge F1 Pier D12 Precasting Segment (1-4) - Mould S2																	
0250-1650.04	Bridge F1 Pier F03 Precasting Segment (1-6) - Mould S2	24	14-May-13	06-Jun-13	Bridge F1 Pier F03 Precasting Segment (1-6) - Mould S2																	
0250-1650.05	Bridge F2 Pier F03 Precasting Segment (1-5) - Mould S2	20	07-Jun-13	26-Jun-13	Bridge F2 Pier F03 Precasting Segment (1-5) - Mould S2																	
0250-1650.16	Bridge F2 Pier F05 Precasting Segment (1-6) - Mould S2	20	27-Jun-13	16-Jul-13	Bridge F2 Pier F05 Precasting Segment (1-6) - Mould S2																	
0250-1655.01	Bridge F3 - F05 Segment - Pier Segment +1 (2 nos) - Mould T	9	20-Apr-13	28-Apr-13	Bridge F3 - F05 Segment - Pier Segment +1 (2 nos) - Mould T																	
0250-1655.02	Bridge F3 - F05 Segment - Remaining (4 nos) - Mould T	12	29-Apr-13	10-May-13	Bridge F3 - F05 Segment - Remaining (4 nos) - Mould T																	
0250-1655.03	Bridge F3 - F06 Segment - Pier Segment + 2 (3 nos) - Mould T	10	11-May-13	20-May-13	Bridge F3 - F06 Segment - Pier Segment + 2 (3 nos) - Mould T																	
0250-1655.04	Bridge F3 - F06 Segment - Remaining (10 nos) - Mould T	30	21-May-13	19-Jun-13	Bridge F3 - F06 Segment - Remaining (10 nos) - Mould T																	
0250-1655.014	Bridge F3 - F07 Segment - Pier Segment +2 (3 nos) - Mould T	10	20-Jun-13	29-Jun-13	Bridge F3 - F07 Segment - Pier Segment +2 (3 nos) - Mould T																	
0250-1655.024	Bridge F3 - F07 Segment - Remaining (10 nos) - Mould T	30	30-Jun-13	29-Jul-13	Bridge F3 - F07 Segment - Remaining (10 nos) - Mould T																	
0250-1830	Segment Storage - Portal Gantry Foundation + Rail Stage 3	6	04-May-13	10-May-13	Segment Storage - Portal Gantry Foundation + Rail Stage 3																	
0250-1860	Segment Unloading Derrick - Assembly + T&C + RPE Cert	17	18-Apr-13 A	10-May-13	Segment Unloading Derrick - Assembly + T&C + RPE Cert																	
0250-1880	Commence Segments Delivery to Site	0	11-May-13		◆ Commence Segments Delivery to Site																	
0250-1870	Segment Unloading Derrick - Foundation Stage 2	0	19-Mar-13 A	26-Mar-13 A	Segment Unloading Derrick - Foundation Stage 2																	
03 - PRELIMINARY WORKS																						
03.3 - Interface Works																						
0330-1110	Submit to FEHD/ER Relocation Sequence & Programme	18	20-Apr-13	11-May-13	Submit to FEHD/ER Relocation Sequence & Programme																	
0330-1100	Works at FEHD Permanent Depot (Stage 1)	36	13-May-13*	24-Jun-13	Works at FEHD Permanent Depot																	
0330-1120	Relocate FEHD to Permanent Depot at Portions IA & X	12	25-Jun-13	09-Jul-13	Relocate FEHD																	
0330-1200	Design/Approval of HGHK Temp Carpark	90	13-Jun-13	27-Sep-13	Design/Approval of HGHK Temp Carpark																	
05 - SECTION 2 & 2A OF THE WORKS																						
05.1 - Cut & Cover Tunnel Ch 4855-4932 (APS Footprint)																						
05.1.1 - D-Wall Construction																						
0511-1078	D-wall Panel S52 Construction	0	22-Mar-13 A	10-Apr-13 A	D-wall Panel S52 Construction																	
05.2 - Cut & Cover Tunnel Ch 4932-5149																						
05.2.1 - D-Wall Construction																						
0521-1990.73	D-wall South Panel S59 Construction	0	22-Feb-13 A	08-Apr-13 A	D-wall South Panel S59 Construction																	
0521-1990.74	D-wall South Panel S60 Construction	9	10-Apr-13 A	30-Apr-13	D-wall South Panel S60 Construction																	
0521-2176	Install Additional Dewatering Well (5 nos.)	14	19-Apr-13 A	07-May-13	Install Additional Dewatering Well (5 nos.)																	
0521-2177	Install Additional Observation Well (7 nos.)	14	27-Apr-13	14-May-13	Install Additional Observation Well (7 nos.)																	
0521-2178	Pump Test C&C Tunnel Stage 2	14	15-May-13	30-May-13	Pump Test C&C Tunnel Stage 2																	
0521-1880	D-wall N71-N73 Grouting for Existing Seawall Rubble Mound	15	02-Jul-13	18-Jul-13	D-wall N71-N73 Grouting for Existing Seawall Rubble Mound																	
0521-2140	D-wall S78-S80 Guide Wall	12	02-Jul-13	15-Jul-13	D-wall S78-S80 Guide Wall																	
05.2.2 - Barrette Construction																						

- Remaining Level of Effort
- Actual Level of Effort
- Actual Work
- Remaining Work
- Critical Remaining Work
- ◆ Milestone

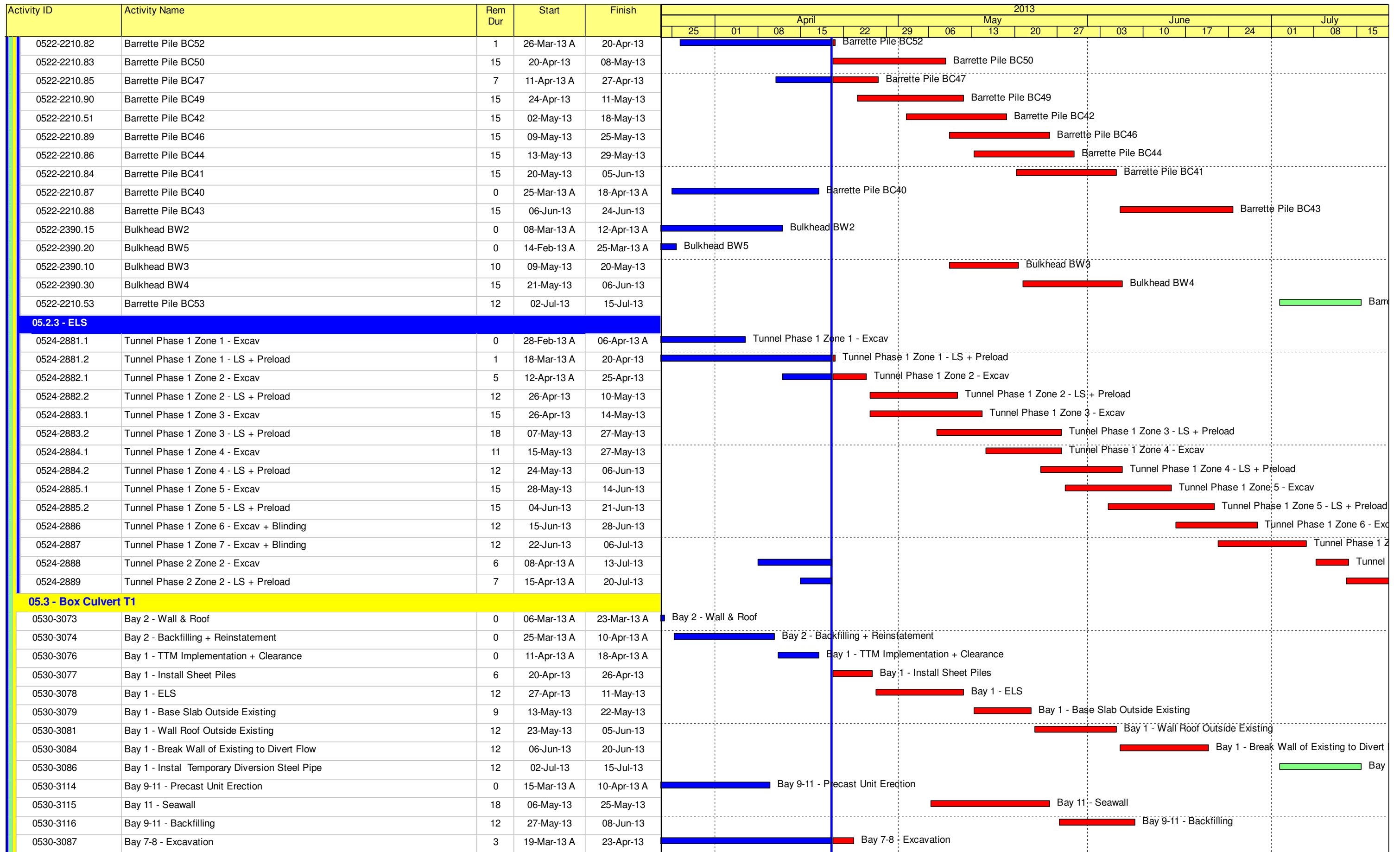
Contract HY/2009/19

Three Month Rolling Programme (20 APR 2013 to 19 JUL 2013) Rev. 1

3MRP

3MRP - Apr 2013 to Jul 2013

Page 2 of 7



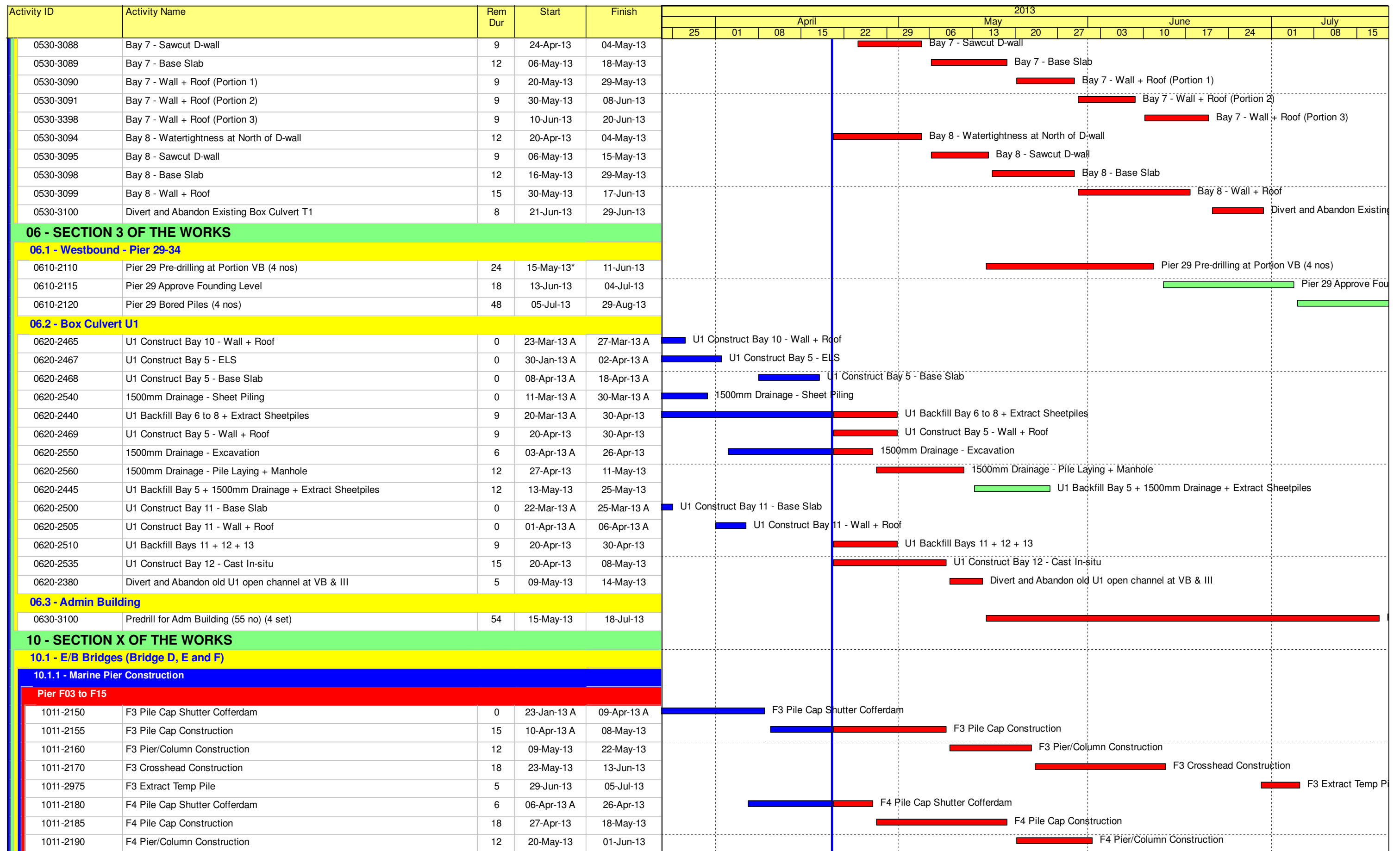
- █ Remaining Level of Effort
- █ Actual Level of Effort
- █ Actual Work
- █ Remaining Work
- █ Critical Remaining Work
- ◆ Milestone

Contract HY/2009/19

Three Month Rolling Programme (20 APR 2013 to 19 JUL 2013) Rev. 1

3MRP

3MRP - Apr 2013 to Jul 2013



- Remaining Level of Effort
- Actual Level of Effort
- Actual Work
- Remaining Work
- Critical Remaining Work
- ◆ Milestone

Contract HY/2009/19

Three Month Rolling Programme (20 APR 2013 to 19 JUL 2013) Rev. 1

3MRP

3MRP - Apr 2013 to Jul 2013

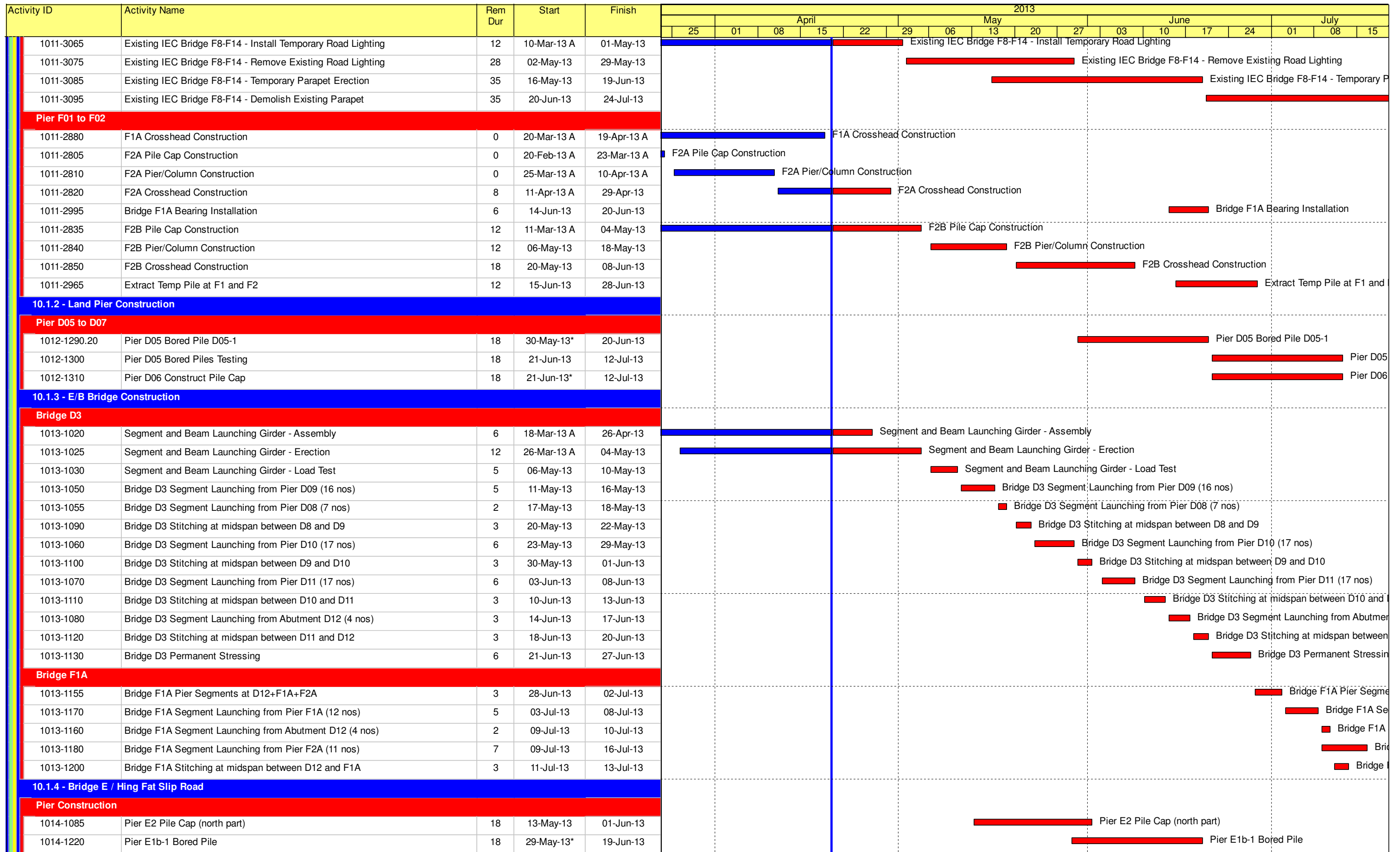
Page 4 of 7

Activity ID	Activity Name	Rem Dur	Start	Finish	2013																		
					April						May						June				July		
					25	01	08	15	22	29	06	13	20	27	03	10	17	24	01	08	15		
1011-2200	F4 Crosshead Construction	18	03-Jun-13	24-Jun-13															F4 Crosshead Construction				
1011-2985	F4 Extract Temp Pile	5	06-Jul-13	11-Jul-13															F4 Extract				
1011-3105	F5 Extract Temp Pile	5	12-Jul-13	17-Jul-13															F5				
1011-2215	F5 Pile Cap Construction	6	12-Mar-13 A	26-Apr-13	F5 Pile Cap Construction																		
1011-2220	F5 Pier/Column Construction	12	27-Apr-13	11-May-13															F5 Pier/Column Construction				
1011-2230	F5 Crosshead Construction	18	13-May-13	01-Jun-13															F5 Crosshead Construction				
1011-2240	F6 Pile Cap Shutter Cofferdam	18	20-Apr-13	11-May-13															F6 Pile Cap Shutter Cofferdam				
1011-2245	F6 Pile Cap Construction	12	13-May-13	25-May-13															F6 Pile Cap Construction				
1011-2250	F6 Pier/Column Construction	12	27-May-13	08-Jun-13															F6 Pier/Column Construction				
1011-2260	F6 Crosshead Construction	24	10-Jun-13	09-Jul-13															F6 Crosshead				
1011-2030	F7 Dismantle Piling Platform	0	22-Mar-13 A	28-Mar-13 A	F7 Dismantle Piling Platform																		
1011-2025	F7 Extract Temp Pile	7	02-May-13	09-May-13															F7 Extract Temp Pile				
1011-2270	F7 Pile Cap Shutter Cofferdam	18	06-May-13	25-May-13															F7 Pile Cap Shutter Cofferdam				
1011-2275	F7 Pile Cap Construction	12	27-May-13	08-Jun-13															F7 Pile Cap Construction				
1011-2280	F7 Pier/Column Construction	12	10-Jun-13	24-Jun-13															F7 Pier/Column Construction				
1011-2290	F7 Crosshead Construction	18	10-Jul-13	30-Jul-13															F7 Crosshead				
1011-2295	F8 Extract Temp Pile	6	10-May-13	16-May-13															F8 Extract Temp Pile				
1011-2300	F8 Pile Cap Shutter Cofferdam	18	16-May-13	05-Jun-13															F8 Pile Cap Shutter Cofferdam				
1011-2305	F8 Pile Cap Construction	12	06-Jun-13	20-Jun-13															F8 Pile Cap Construction				
1011-2310	F8 Pier/Column Construction	12	21-Jun-13	05-Jul-13															F8 Pier/Column Co				
1011-2320	F8 Crosshead Construction	18	10-Jul-13	30-Jul-13															F8 Crosshead				
1011-2050	F9 Dismantle Piling Platform	3	29-Mar-13 A	23-Apr-13	F9 Dismantle Piling Platform																		
1011-2055	F9 Extract Temp Pile	4	17-May-13	21-May-13															F9 Extract Temp Pile				
1011-2380	F9 Pile Cap Construction	18	27-May-13	17-Jun-13															F9 Pile Cap Construction				
1011-2390	F9 Pier/Column Construction	12	18-Jun-13	02-Jul-13															F9 Pier/Column Constr				
1011-2060	F10 Dismantle Piling Platform	6	11-Apr-13 A	26-Apr-13	F10 Dismantle Piling Platform																		
1011-2065	F10 Extract Temp Pile	4	22-May-13	25-May-13															F10 Extract Temp Pile				
1011-2410	F10 Pile Cap Construction	18	18-Jun-13	09-Jul-13															F10 Pile Cap				
1011-2420	F10 Pier/Column Construction	12	10-Jul-13	23-Jul-13															F10 Pier/Column				
1011-2070	F11 Dismantle Piling Platform	7	27-Apr-13	06-May-13															F11 Dismantle Piling Platform				
1011-2072	F11 Extract Temp Pile	4	27-May-13	30-May-13															F11 Extract Temp Pile				
1011-2350	F11 Pile Cap Construction	18	25-Jun-13	16-Jul-13															F11 Pile Cap Construction				
1011-2075	F12 Dismantle Piling Platform	7	07-May-13	14-May-13															F12 Dismantle Piling Platform				
1011-2078	F12 Extract Temp Pile	4	31-May-13	04-Jun-13															F12 Extract Temp Pile				
1011-2440	F12 Pile Cap Construction	18	15-Jun-13*	06-Jul-13															F12 Pile Cap Cor				
1011-2450	F12 Pier/Column Construction	12	08-Jul-13	20-Jul-13															F12 Pier/Column				
1011-2080	F13 Dismantle Piling Platform	7	15-May-13	22-May-13															F13 Dismantle Piling Platform				
1011-2083	F13 Extract Temp Pile	4	05-Jun-13	08-Jun-13															F13 Extract Temp Pile				
1011-2470	F13 Pile Cap Construction	18	08-Jul-13	27-Jul-13															F13 Pile Cap Construction				
1011-2085	F14 Dismantle Piling Platform	7	23-May-13	30-May-13															F14 Dismantle Piling Platform				
1011-2088	F14 Extract Temp Pile	4	10-Jun-13	14-Jun-13															F14 Extract Temp Pile				
1011-3005	Design of Temporary Parapet for IEC at Pier F8 to F14	21	15-Jan-13 A	15-May-13	Design of Temporary Parapet for IEC at Pier F8 to F14																		
1011-3035	Submit MS for Construction of Temp Parapet at IEC Bridge	6	11-Feb-13 A	26-Apr-13	Submit MS for Construction of Temp Parapet at IEC Bridge																		
1011-3045	Approve MS for Construction of Temp Parapet at IEC Bridge	15	27-Apr-13	15-May-13	Approve MS for Construction of Temp Parapet at IEC Bridge																		

█ Remaining Level of Effort
█ Actual Level of Effort
█ Actual Work
█ Remaining Work
█ Critical Remaining Work
◆ Milestone

Contract HY/2009/19
Three Month Rolling Programme (20 APR 2013 to 19 JUL 2013) Rev. 1

3MRP
3MRP - Apr 2013 to Jul 2013
Page 5 of 7



- Remaining Level of Effort
- Actual Level of Effort
- Actual Work
- Remaining Work
- Critical Remaining Work
- ◆ Milestone

Contract HY/2009/19

Three Month Rolling Programme (20 APR 2013 to 19 JUL 2013) Rev. 1

3MRP

3MRP - Apr 2013 to Jul 2013

Page 6 of 7

Activity ID	Activity Name	Rem Dur	Start	Finish	2013																		
					April						May						June				July		
					25	01	08	15	22	29	06	13	20	27	03	10	17	24	01	08	15		
1014-1086	Pier E2 Column	12	03-Jun-13	17-Jun-13																			
1014-1087	Pier E2 Crosshead + Bearing	30	18-Jun-13	23-Jul-13																			
1014-1230	Pier E1b-3 Bored Pile	30	02-Jul-13*	05-Aug-13																			
10.3 - Middle Bridge (Bridge F)																							
10.3.1 - Pier Construction																							
Abutment D12																							
1031-1055	Bored pile D12-05 (low headroom)	0	04-Mar-13 A	04-Apr-13 A																			
1031-1370	Bored pile D12-13 (low headroom)	12	01-Mar-13 A	04-May-13																			
1031-1390	Bored pile D12-14 (low headroom)	20	10-Apr-13 A	14-May-13																			
1031-1380	Bored pile D12-06 (low headroom)	30	06-May-13	08-Jun-13																			
1031-1400	Bored pile D12-07 (low headroom)	30	15-May-13	19-Jun-13																			
10.5 - Temporary Bridge																							
10.5.1 - Temporary Bridge 'TA'																							
1051-1009	Temporary Bridge TA1 - Fabrication Off-site	28	01-Jun-13	05-Jul-13																			
1051-1011	Temporary Bridge TA1 - Footing	18	14-Jun-13	05-Jul-13																			
1051-1012	Temporary Bridge TA1 - Steel Column	18	06-Jul-13	26-Jul-13																			
10.6 - Tunnel Approach Ramp																							
10.6.1 - Approach Ramp (Excluding Portion IIB)																							
Bored Piles																							
1061-1530	Bored Pile Ramp - BN010	2	26-Mar-13 A	22-Apr-13																			
1061-1540	Bored Pile Ramp - BN09	18	23-Apr-13	14-May-13																			
1061-1550	Bored Pile Ramp - BN08	18	15-May-13	04-Jun-13																			
1061-1560	Bored Pile Ramp - BN02	18	05-Jun-13	26-Jun-13																			
1061-1570	Bored Pile Ramp - BN01	18	27-Jun-13	18-Jul-13																			

- Remaining Level of Effort
- Actual Level of Effort
- Actual Work
- Remaining Work
- Critical Remaining Work
- Milestone

Contract HY/2009/19

Three Month Rolling Programme (20 APR 2013 to 19 JUL 2013) Rev. 1

3MRP

3MRP - Apr 2013 to Jul 2013

Page 7 of 7